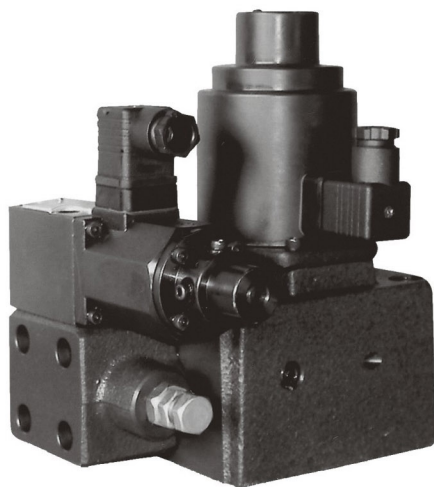
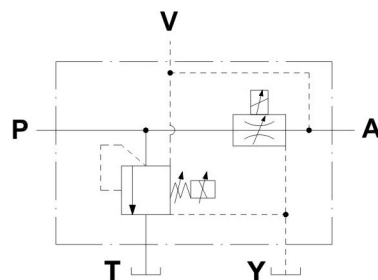


Proportional Electro-Hydraulic Relief & Flow Control Valves



JIS Graphic Symbol



Model Definition

EFBG	-03	-125	-C
Model Series	Valve Size	Max. Flow (ℓ/min)	Pressure Adjustment Range (MPa)
Proportional Electro-Hydraulic Relief & Flow Control Valve	03 : 3/8" 06 : 3/4" 10 : 1 1/4"	125 250 500	C : 14 H : 21

Specification

Model	Max. Operating Pressure (kgf/cm ²)	Max. Flow (ℓ/min)	Flow Adjustment Range (ℓ/min)	Weight (kg)
EFBG-03	210	125	1~125	18
EFBG-06		250	2~250	33
EFBG-10		500	5~500	58

Flow System					Pressure System				
Valve Internal Resistance (A→B) kgf/cm ²	Rated Flow (mA)	Coil Resistance	Magnetic Hysteresis	Repeatability	Max. Allowable Back Pressure (MPa)	Rated Flow (mA)	Coil Resistance	Magnetic Hysteresis	Repeatability
5	750	40Ω	< 7%	< 1%	Note	C:750 H:700	10Ω	< 3%	< 1%

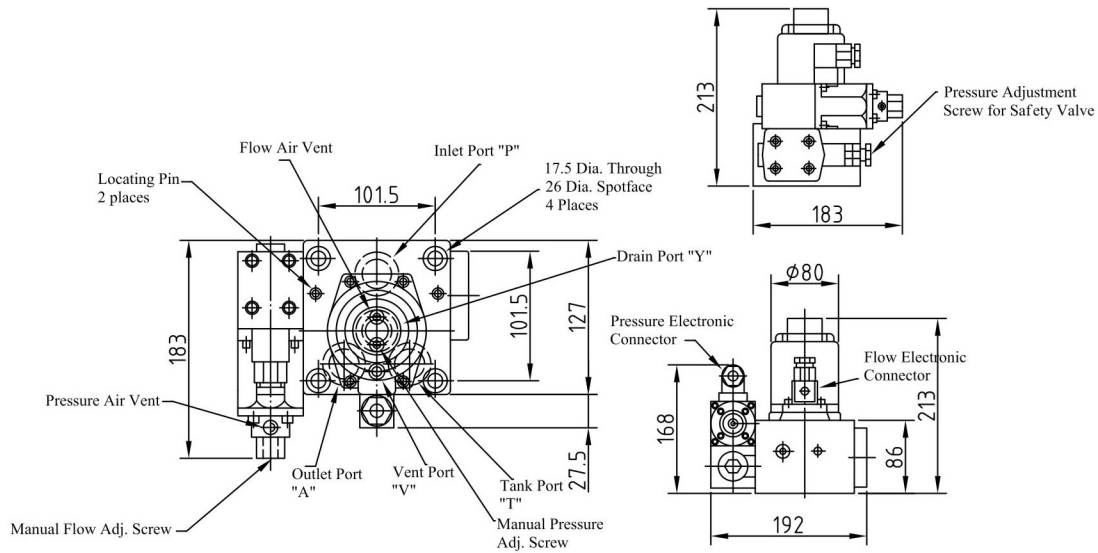
Note: The resistance of the return pipe should be reduced by using only one pipe and directly insert into the oil tank

Instructions

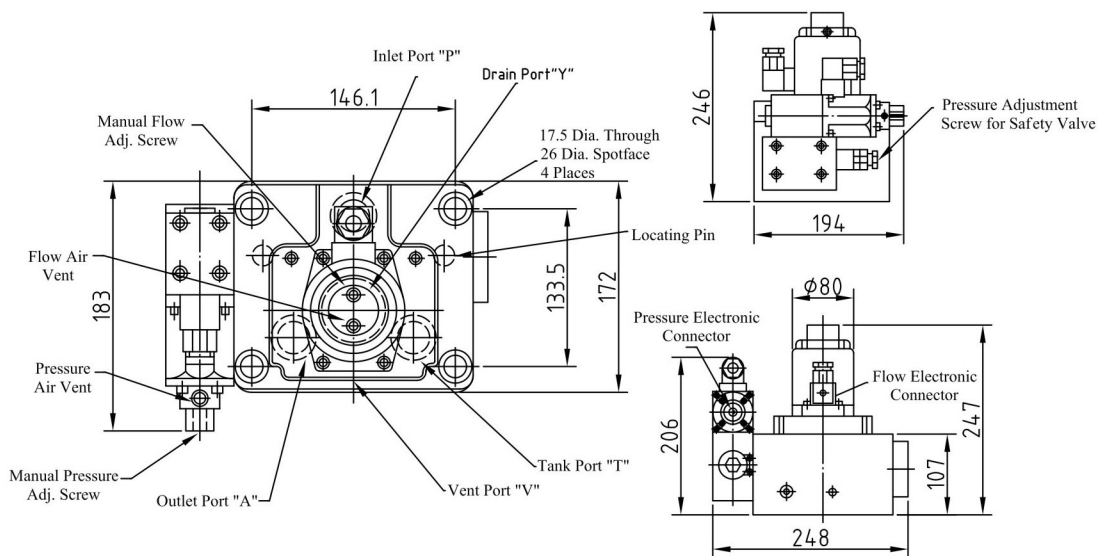
- Installation: Users are advised to face the air-bleeder up.
- Air Elimination: In order to stabilize the pressure, air in the pipe and valve should be eliminated completely. Please face the air-bleeder up, open up the screw to eliminate the air till there is no bubble (set up the pressure at 30kgf/cm²), then screw back in.
- Manual Pressure Adjustment Screw: when the electric control breaks down and is in need of power supply, users can just manually spin the screw in.
- Drain: Please directly insert the return lines underneath the tank to avoid the pipe from bending or resisting.
- The Pressure Safety Setting: Base on actual out flow of the pump and actual operating pressure. Users are advised to add 15kgf/cm² when the pump is under 100 L/min.

Dimension

EFBG-03

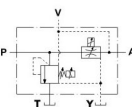


EFBG-06

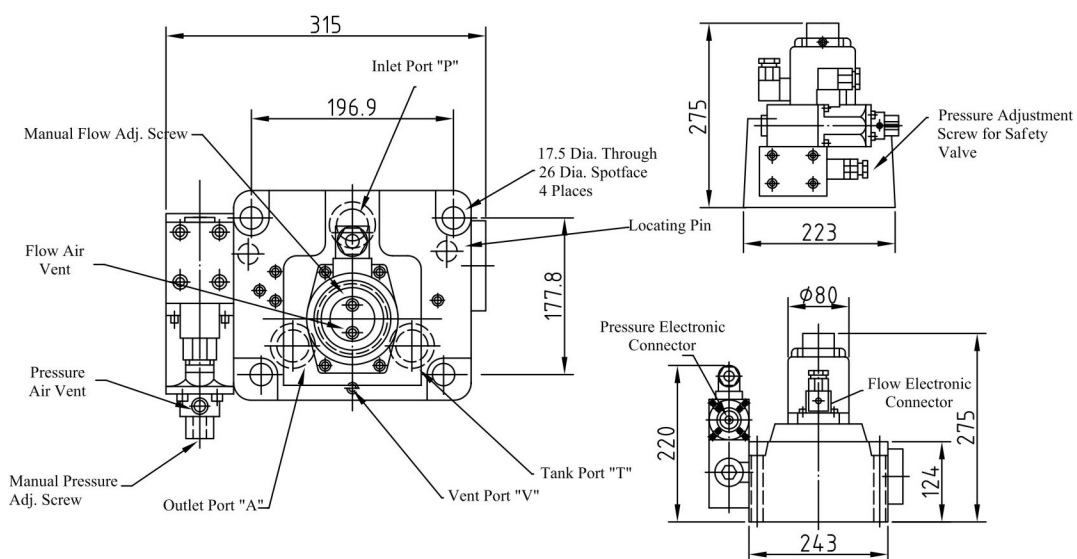


F

Proportional Valves
Proportional Electro-Hydraulic Relief & Flow Control Valves



EFBG-10



F

Proportional Electro-Hydraulic Relief & Flow Control Valves
Proportional Valves

